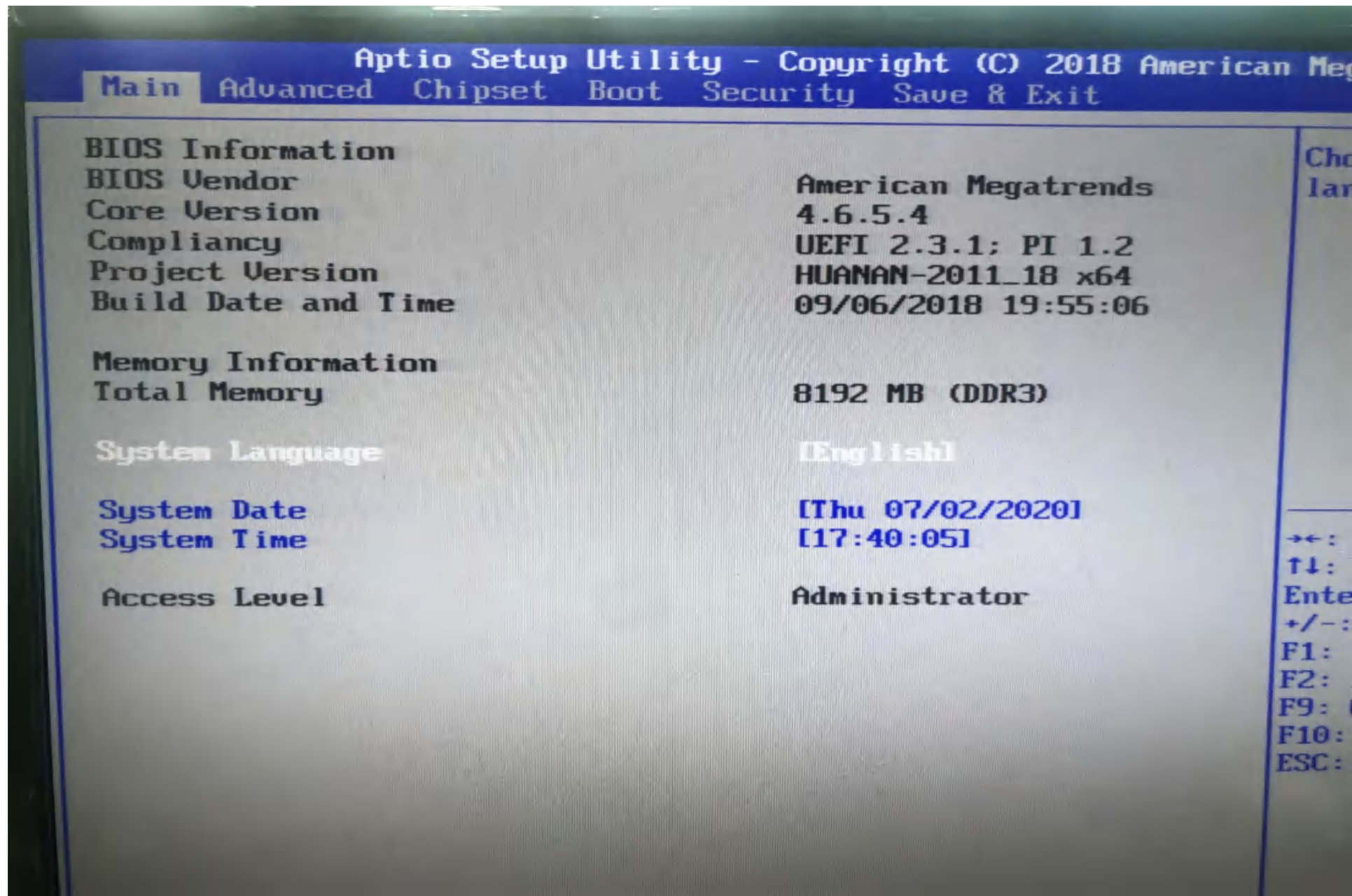
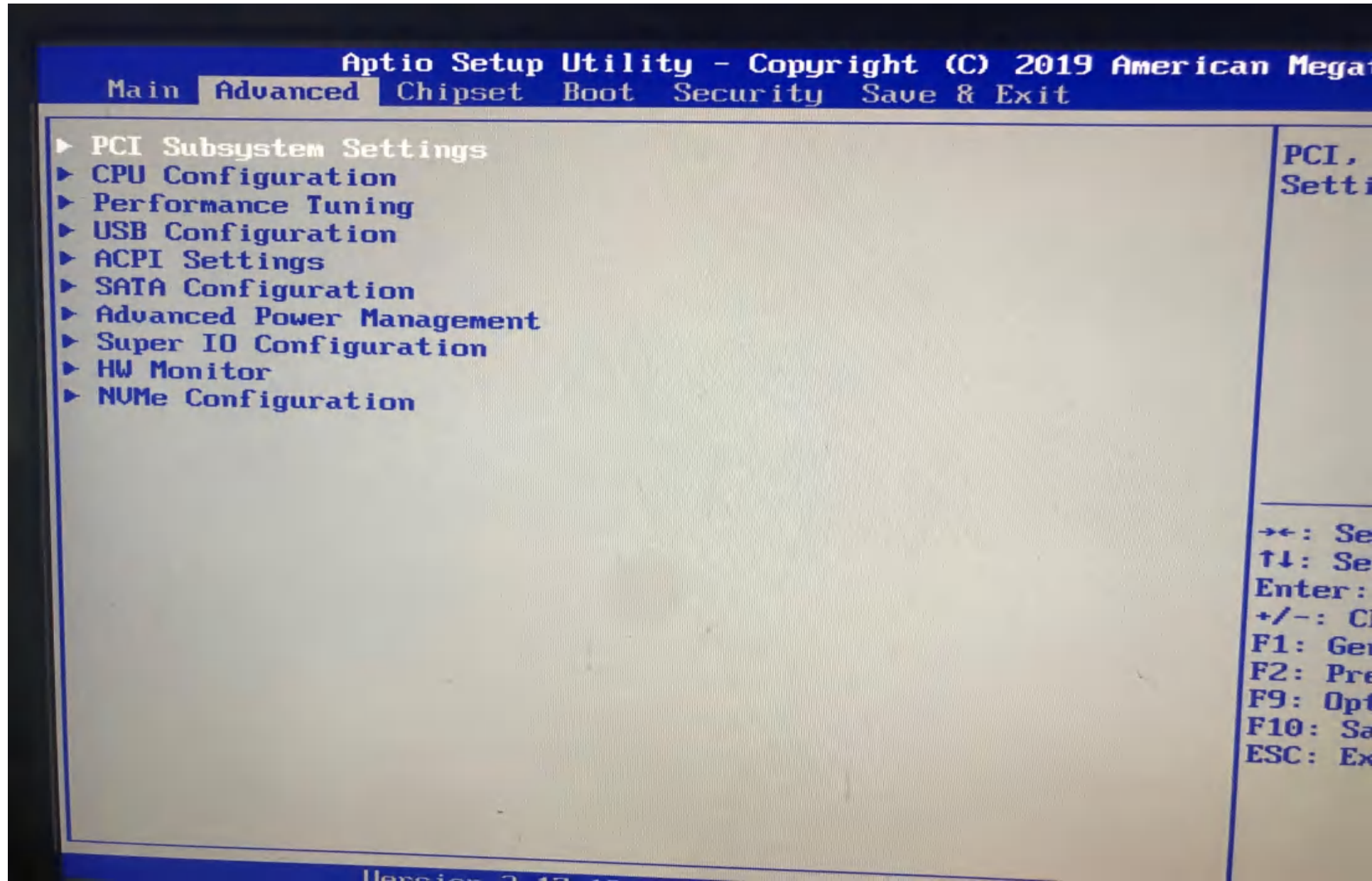


X79 PRO



Above 4G Decoding



Advanced

PCI Bus Driver Version V 2.05.02

PCI 64bit Resources Handling Above 4G Decoding [Disabled]

PCI Common Settings

PCI Latency Timer

[32 PCI Bus Cycles]

VGA Palette Snoop

[Disabled]

PERR# Generation

[Disabled]

SERR# Generation

[Disabled]

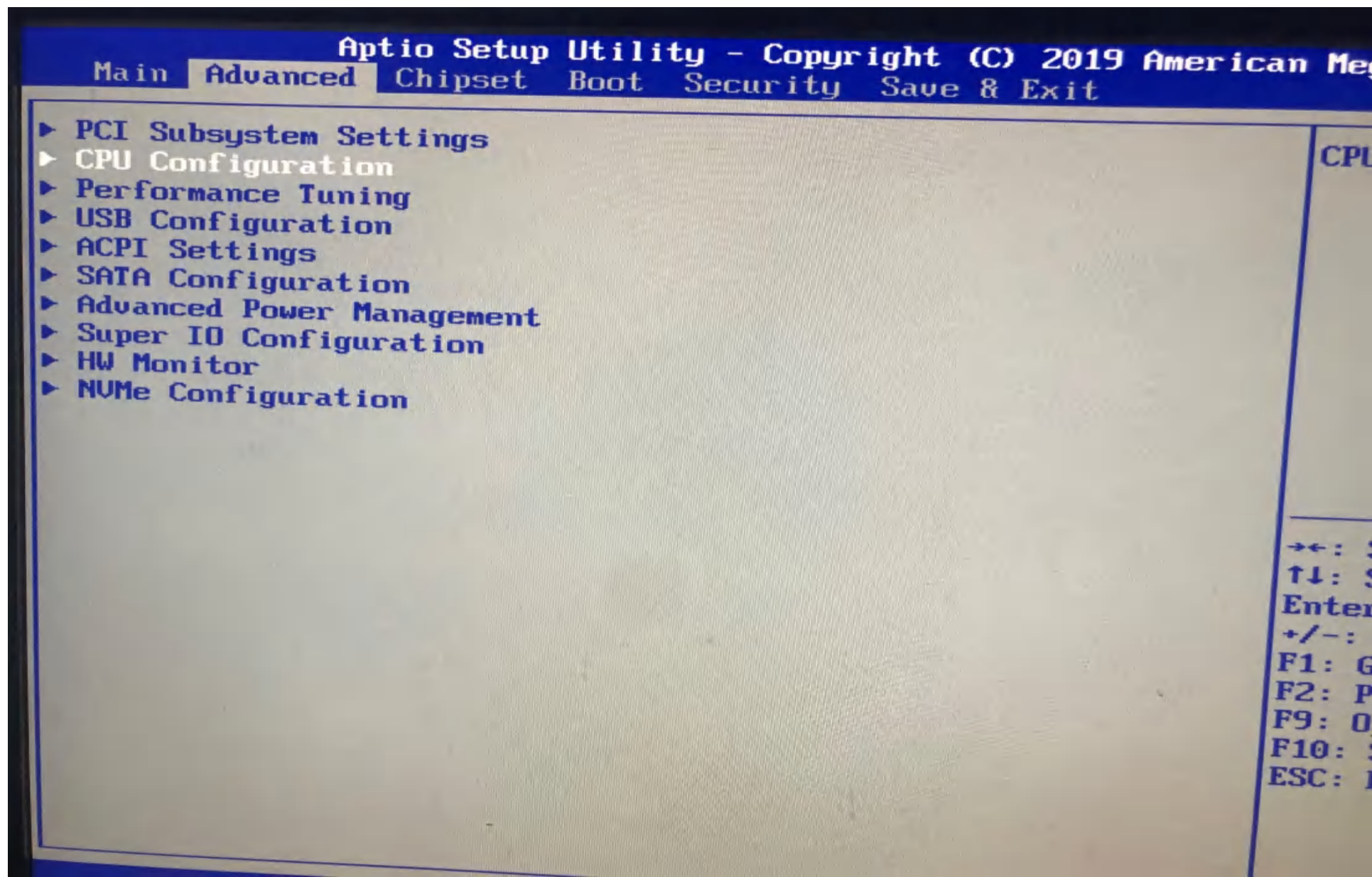
► PCI Express Settings

► PCI Express GEN 2 Settings

Ena
cap
in
(On)
bit

→←: S
↑↓: S
Enter
+/-:
F1: G
F2: P
F9: O
F10: S
ESC: E

关闭超线程



CPU Configuration

▶ Socket 0 CPU Information

CPU Speed
64-bit2600 MHz
Supported

Hyper-threading

[Enabled]

Active Processor Cores

[All]

Limit CPUID Maximum

[Disabled]

Execute Disable Bit

[Enabled]

Hardware Prefetcher

[Enabled]

Adjacent Cache Line Prefetch

[Enabled]

DCU Streamer Prefetcher

[Enabled]

DCU IP Prefetcher

[Enabled]

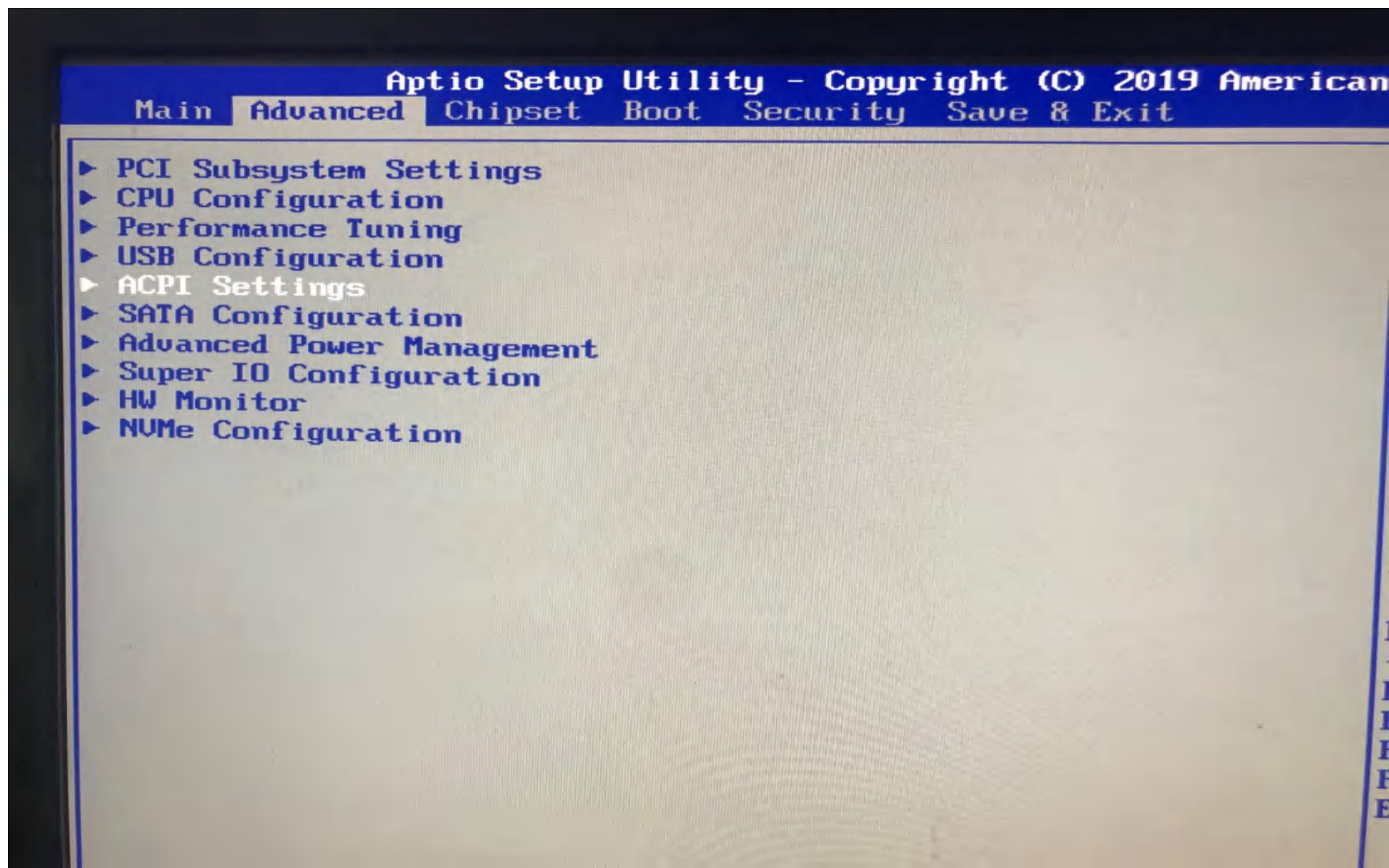
Intel Virtualization Technology

[Enabled]

▶ CPU Power Management Configuration

En
L
Hy
an
no
Hy
Wh
pe→←:
↑↓:
Ent
+/-
F1:
F2:
F9:
F10:
ESC:

睡眠



ACPI Settings

Enable ACPI Auto Configuration [Disabled]

Enable Hibernation [Enabled]

ACPI Sleep State [S1 only (CPU Stop Cl...)]

Lock Legacy Resources [Disabled]

ACPI Sleep State

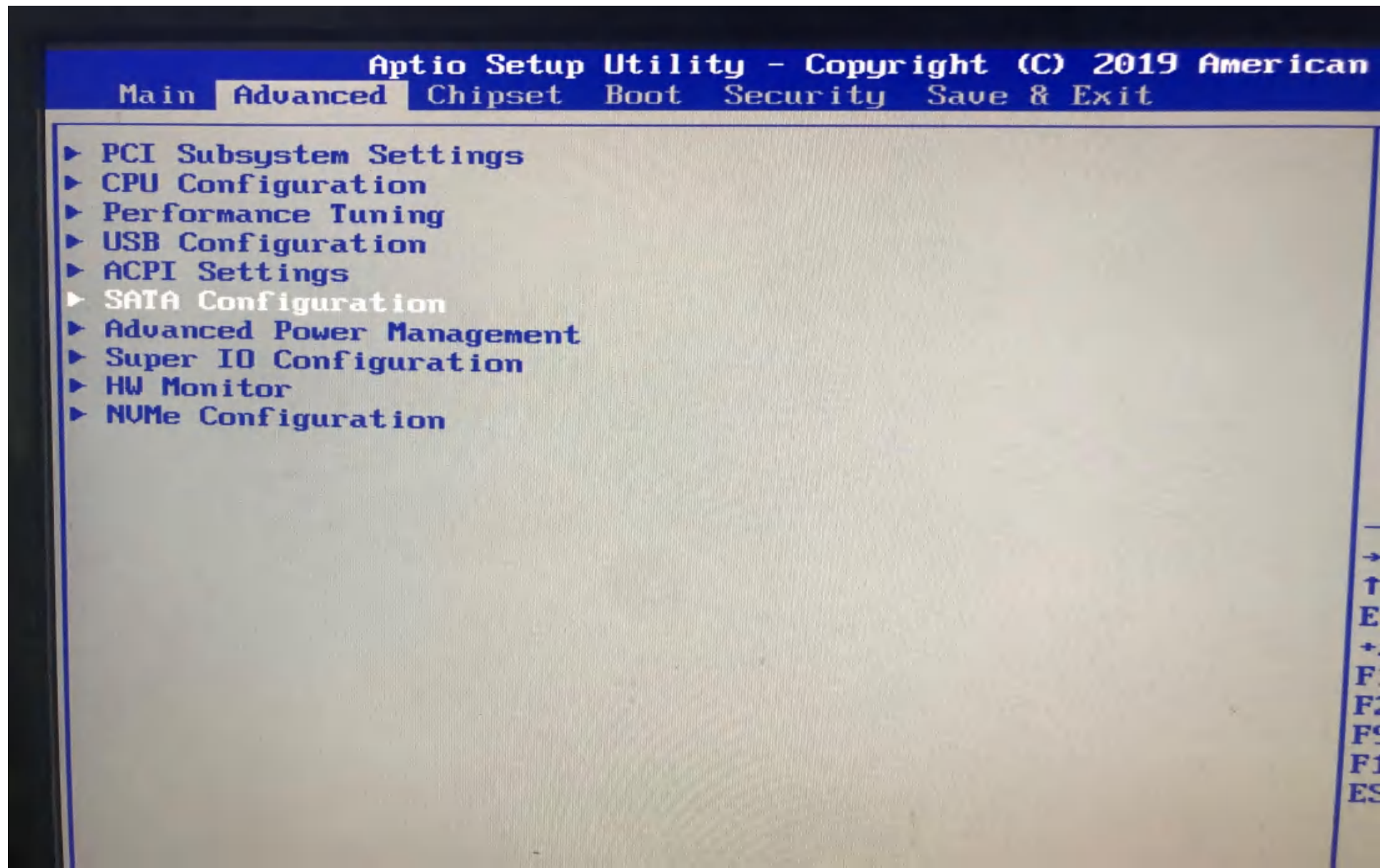
Suspend Disabled

S1 only (CPU Stop Clock)

S3 only (Suspend to RAM)

Both S1 and S3 available for OS to choose

硬盘热拔插



SATA Configuration

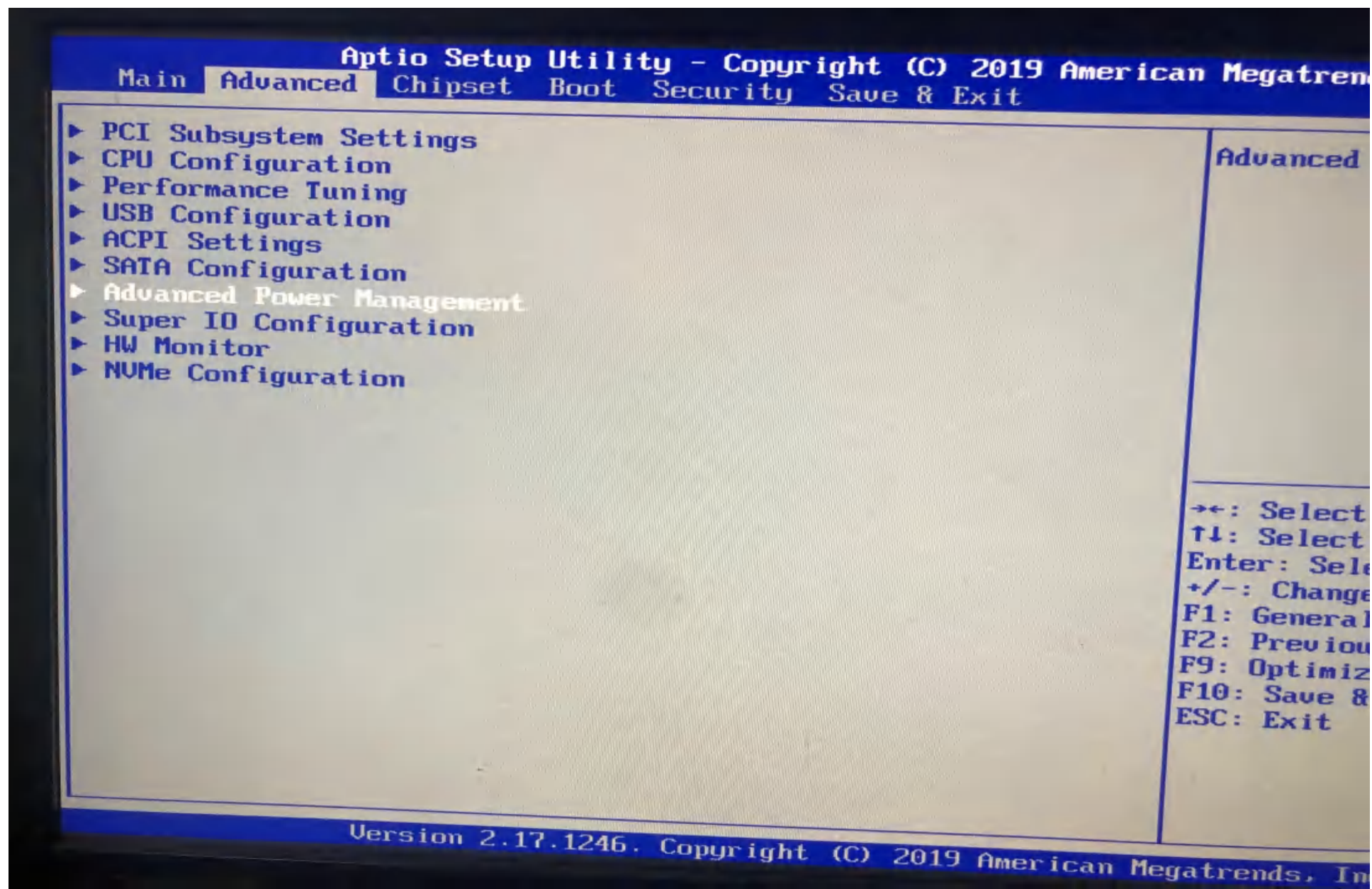
SATA Port0	Not Present
SATA Port1	Not Present
SATA Port2	Not Present
SATA Port3	Not Present
SATA Port4	Not Present
SATA Port5	Not Present

SATA Mode	[AHCI Mode]
Aggressive Link Power Management	[Enabled]

Port 0 Hot Plug	[Disabled]
Port 1 Hot Plug	[Disabled]
Port 2 Hot Plug	[Disabled]
Port 3 Hot Plug	[Disabled]
Port 4 Hot Plug	[Disabled]
Port 5 Hot Plug	[Disabled]

External SATA Port 0	[Disabled]
External SATA Port 1	[Disabled]
External SATA Port 2	[Disabled]
External SATA Port 3	[Disabled]
External SATA Port 4	[Disabled]
External SATA Port 5	[Disabled]

AC 启动



Advanced

Advanced Power Management

AC Power Loss

[Power Off]

USB KB/MS WakeUp

[Enabled]

LAN Wakeup

[Disabled]

AC Powe

→←: Sele

↑↓: Sele

Enter: S

+/-: Cha

F1: Gene

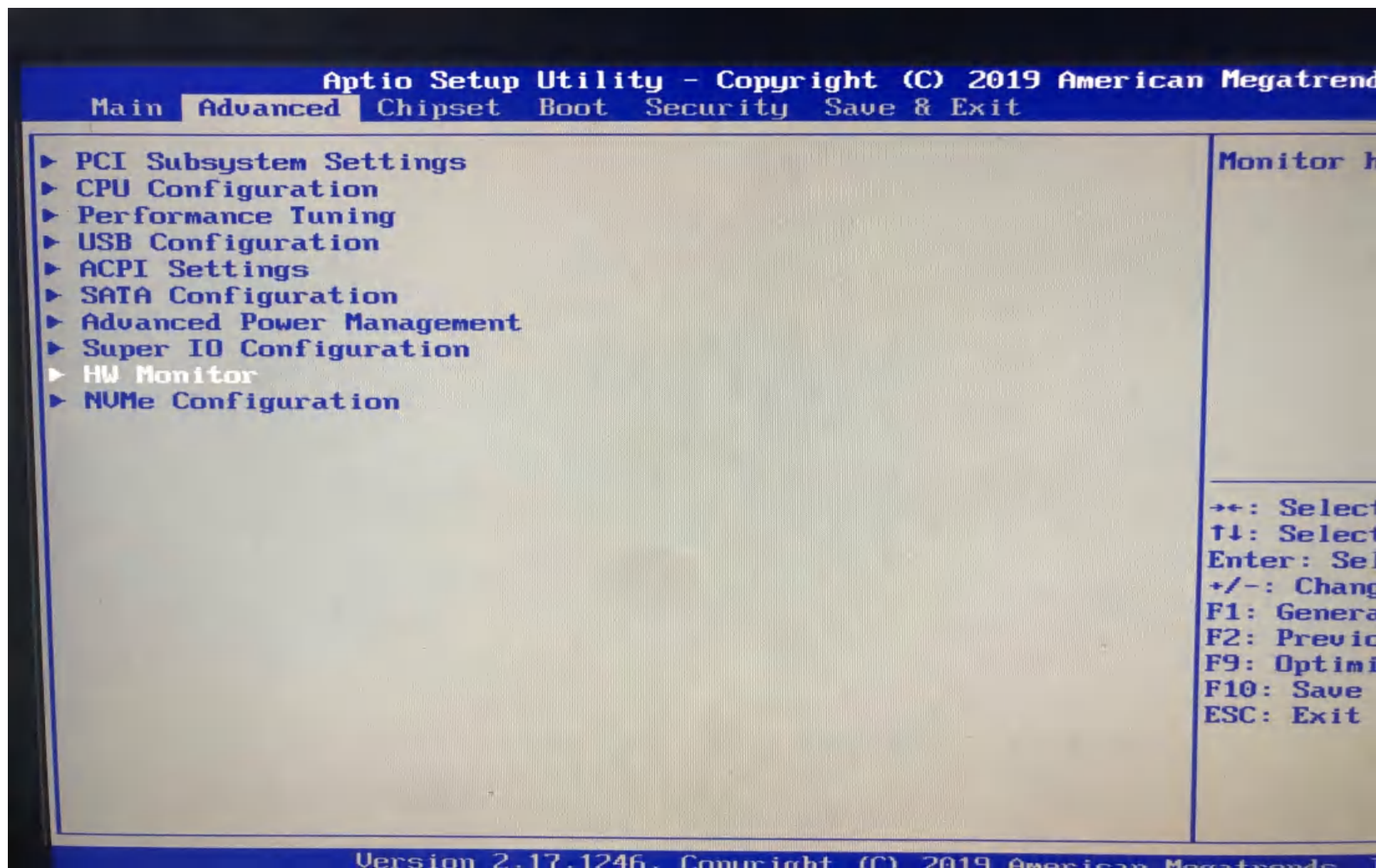
F2: Prev

F9: Opti

F10: Sav

ESC: Exi

温控



Advanced

Pc Health Status

Tbase0 18
CPU Temperature : +31°C

SysFan Speed : N/A
CpuFan Speed : 1422 RPM

CPU Voltage : +1.024 V

CPU SmartFan [Enabled]
T1 20
PWM1 (%) 75
T2 30
PWM2 (%) 80
T3 40
PWM3 (%) 85
T4 50
PWM4 (%) 95
T5 60

Tbase0

→←: Select
↑↓: Select
Enter: Se
+/-: Chan
F1: Gener
F2: Prev
F9: Optim
F10: Save
ESC: Exit

Aptio Setup Utility - Copyright (C) 2019 American Megatrends
Main Advanced **Chipset** Boot Security Save & Exit

- ▶ North Bridge
- ▶ South Bridge
- ▶ ME Subsystem

North Br

→←: Select
↑↓: Select
Enter: Sel
+/-: Chang
F1: Genera
F2: Previo
F9: Optimi
F10: Save
ESC: Exit

Version 2.17.1246. Copyright (C) 2019 American Megatrends

► IOH Configuration

► QPI Configuration

Compatibility RID

[Enabled]

Memory Configuration

Total Memory

8192 MB (DDR3)

Current Memory Mode

Independent

Current Memory Speed

1333 MHz

Mirroring

Not Possible

Sparing

Not Possible

Memory Mode

[Independent]

DRAM RAPL BWLIMIT

[1]

Perfmon and DFX devices

[HIDE]

DRAM RAPL MODE

[Disabled]

DDR Speed

[Auto]

Channel Interleaving

[Auto]

Rank Interleaving

[Auto]

Device Tagging

[Disabled]

Altitude

[300 M]

Serial Message Debug Level

[Minimum]

▲ IOH Con

→+: Select
↑↓: Select
Enter: Save
+/-: Change
F1: General
F2: Previous
F9: Optim
F10: Save
ESC: Exit

► Intel(R) VT for Directed I/O Configuration

Intel(R) I/OAT	[Disabled]
DCA Support	[Enabled]
Gen3 Equalization WA's	[Disabled]
No Snoop Optimization	[VC1]
MMIOH Size	[128G]

IOH 0 PCIe port Bifurcation Control

IOU1 - PCIe Port	[x8]
PORT 1A Link Speed	[GEN3]
IOU2 - PCIe Port	[x16]
PORT 2A Link Speed	[GEN3]
IOU3 - PCIe Port	[x16]
PORT 3A Link Speed	[GEN3]

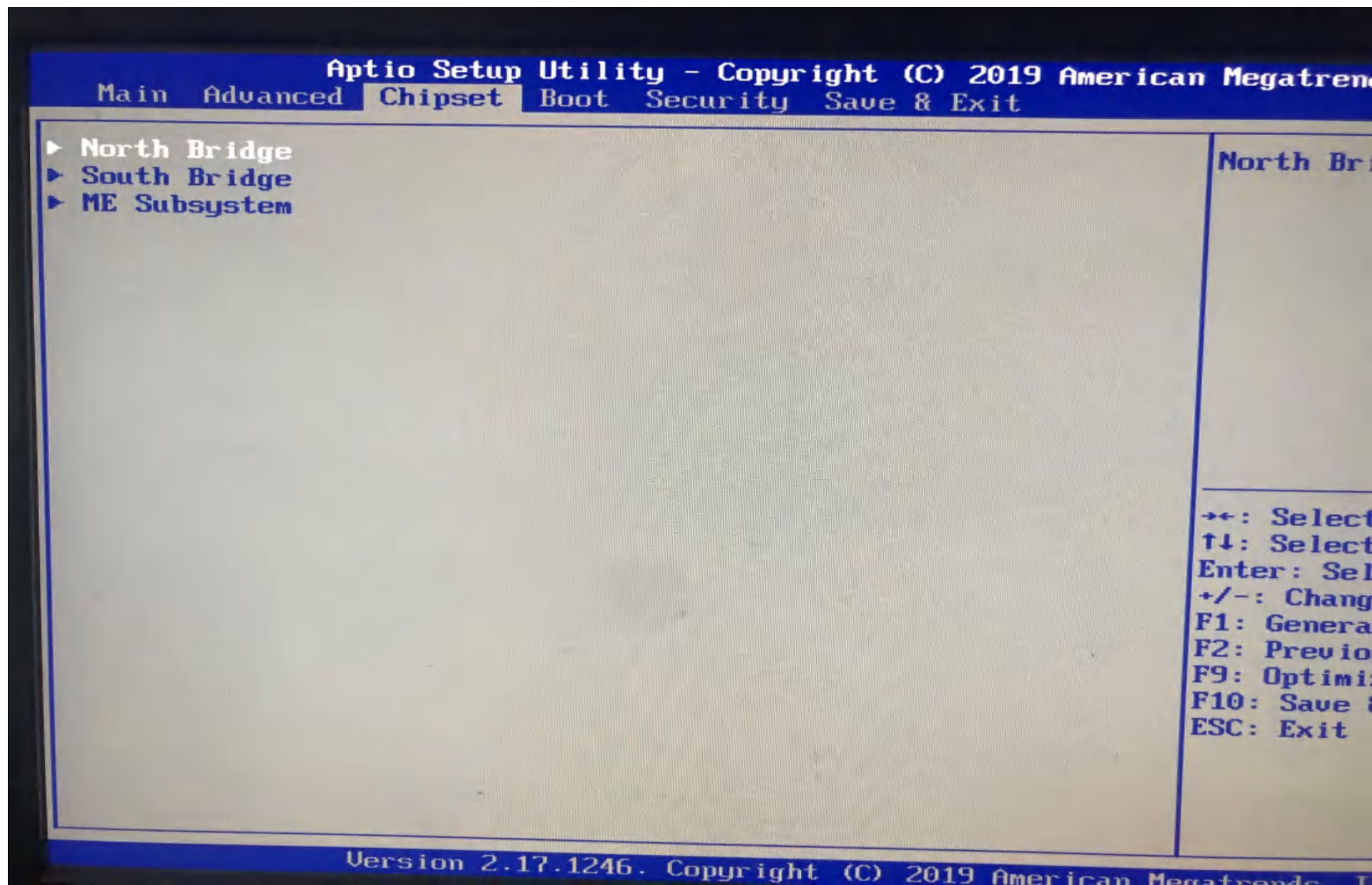
IOH 0 PCIe port Data Direct I/O Control

PORT 1A	[Enabled]
PORT 2A	[Enabled]
PORT 3A	[Enabled]

Intel(R)
Configu

→+: Sele
↑↓: Sele
Enter: Se
+/-: Char
F1: Gener
F2: Previ
F9: Optim
F10: Save
ESC: Exit

内存频率



► IOH Configuration

► QPI Configuration

Compatibility RID

[Enabled]

Memory Configuration

Total Memory

Current Memory Mode

Current Memory Speed

Mirroring

Sparing

Memory Mode

DRAM RAPL BWLIMIT

Perfmon and DFX devices

DRAM RAPL MODE

DDR Speed

Channel Interleaving

Rank Interleaving

Device Tagging

Altitude

Serial Message Debug Level

DDR Speed

Auto

Force DDR3 800

Force DDR3 1066

Force DDR3 1333

Force DDR3 1600

Force DDR3 1866

[H
[Disabled]

[Auto]

[Auto]

[Auto]

[Disabled]

[300 M]

[Minimum]

Force 1

→←: Sele

↑↓: Sele

Enter: S

+/-: Cha

F1: Gene

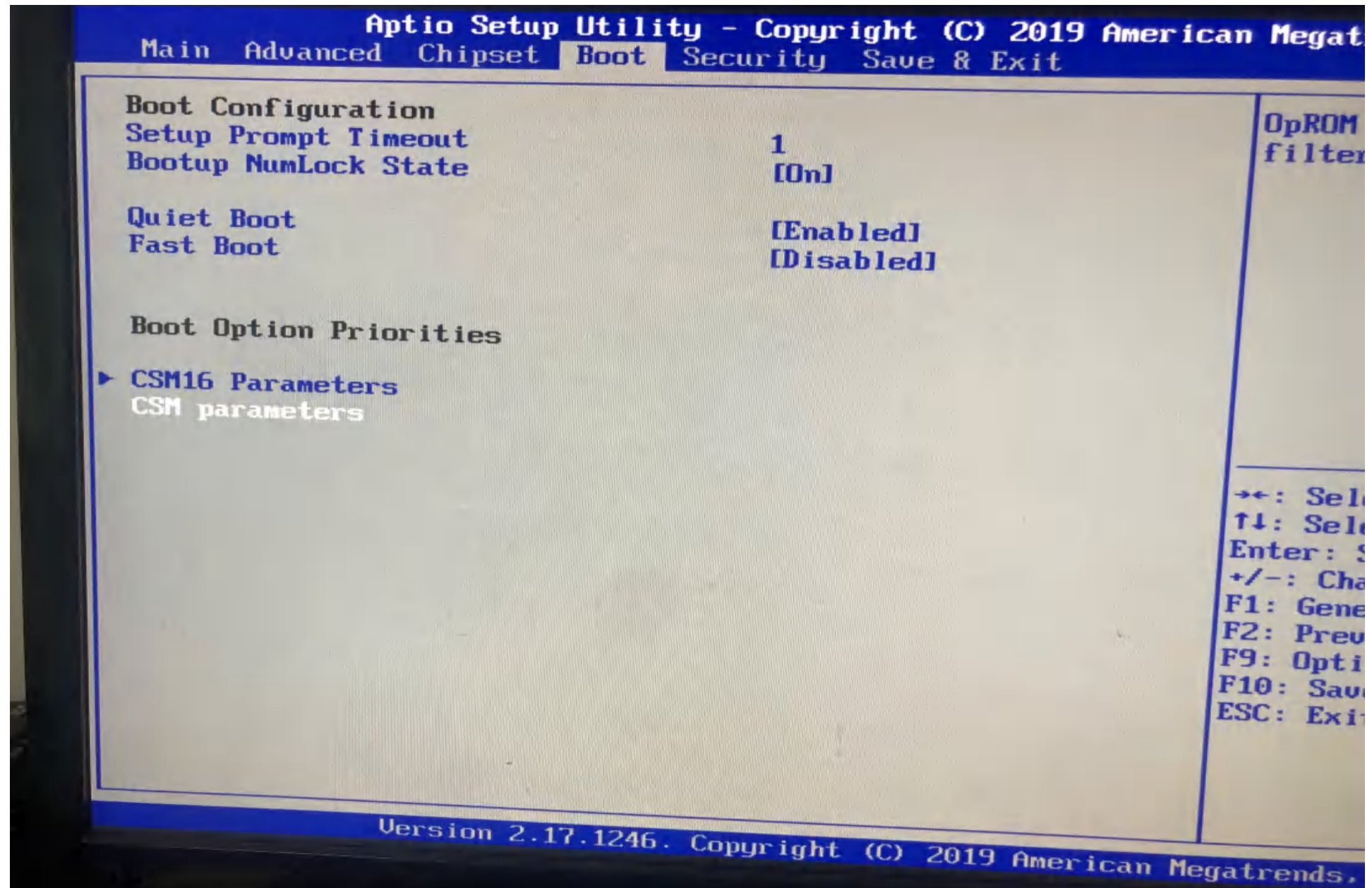
F2: Prev

F9: Opti

F10: Save

ESC: Exit

网卡启动



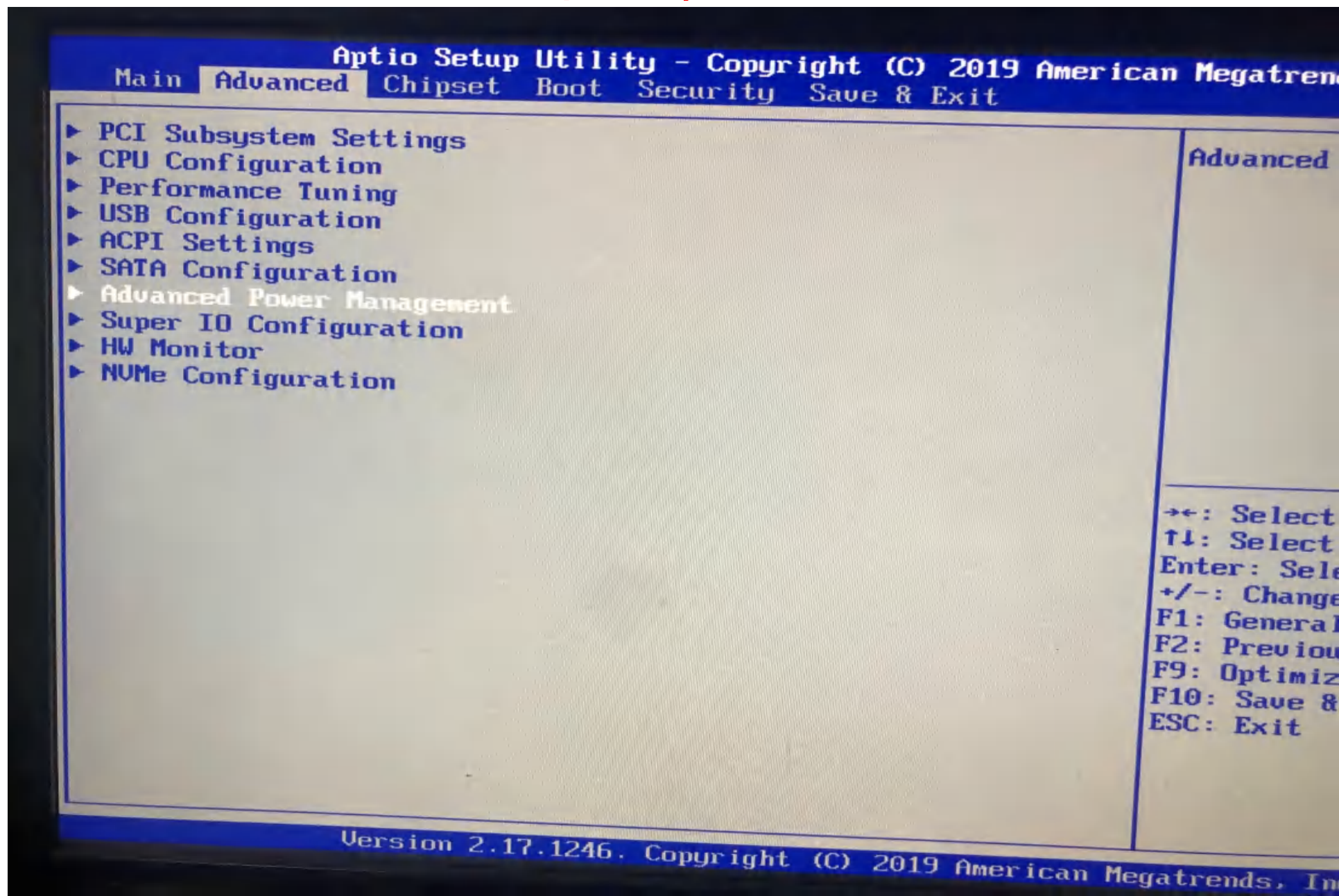
Launch CSM	[Enabled]
Boot option filter	[UEFI and Legacy]
Launch PXE OpROM policy	[Do not launch]
Launch Storage OpROM policy	[Legacy only]
Launch Video OpROM policy	[Legacy only]
Other PCI device ROM priority	[UEFI OpROM]

Control
and Le

Launch PXE OpROM policy
Do not launch
UEFI only
Legacy only

: Sele
: Sele
ter: S
+/-: Cha
F1: Gene
F2: Prev
F9: Opti
F10: Save
ESC: Exit

网络唤醒



Advanced

Advanced Power Management

AC Power Loss	[Power Off]
USB KB/MS WakeUp	[Enabled]
LAN Wakeup	[Disabled]

AC Power

→←: Select
↑↓: Select
Enter: Save
+/-: Change
F1: General
F2: Previous
F9: Opti
F10: Save
ESC: Exit