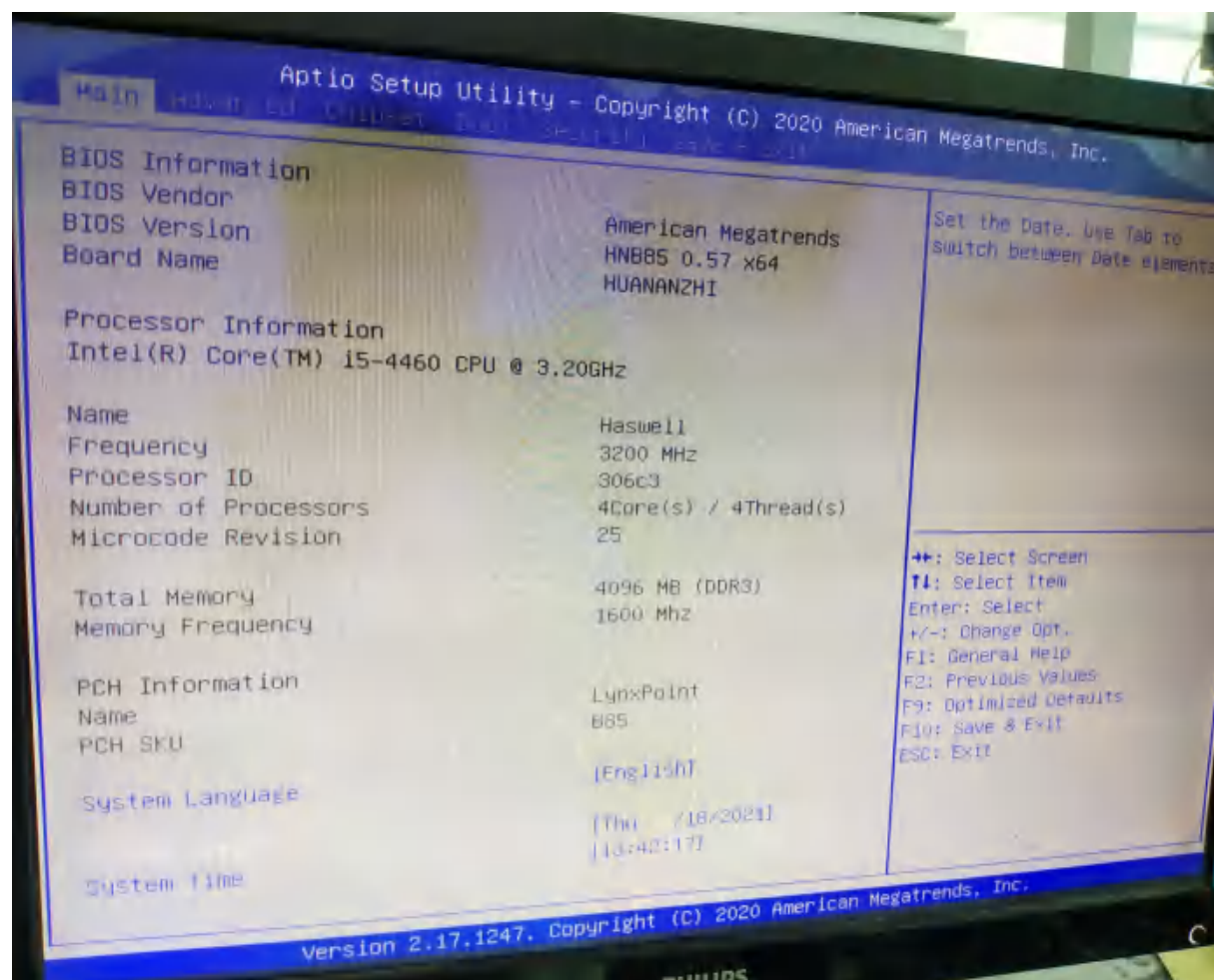
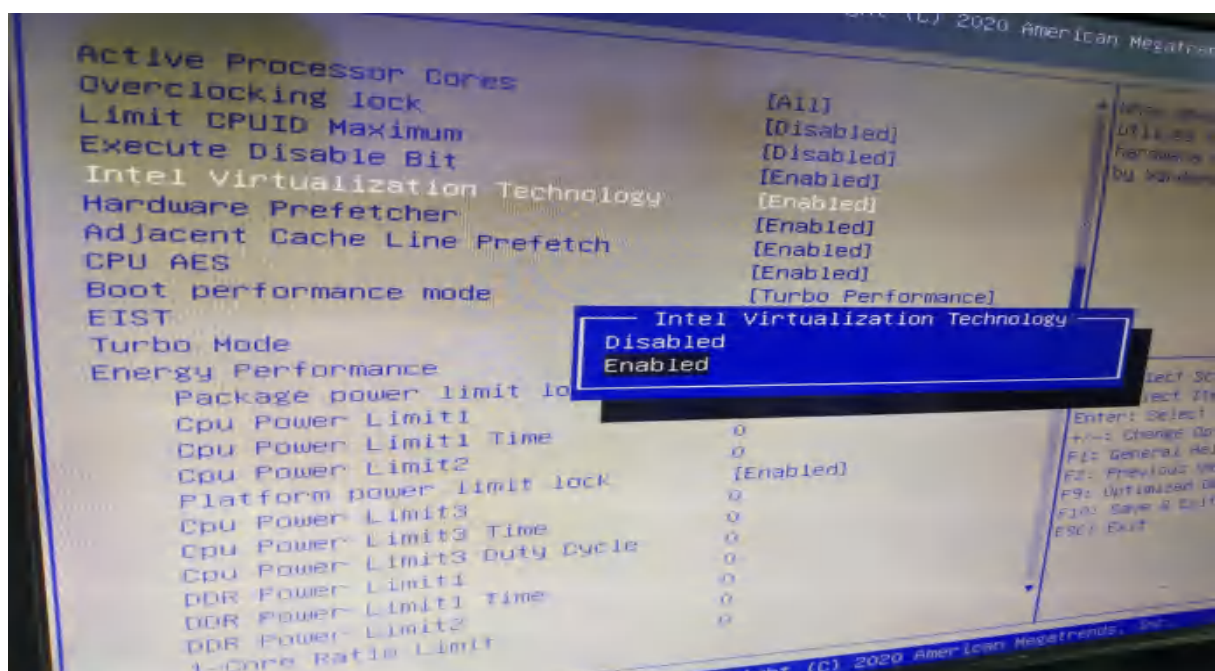
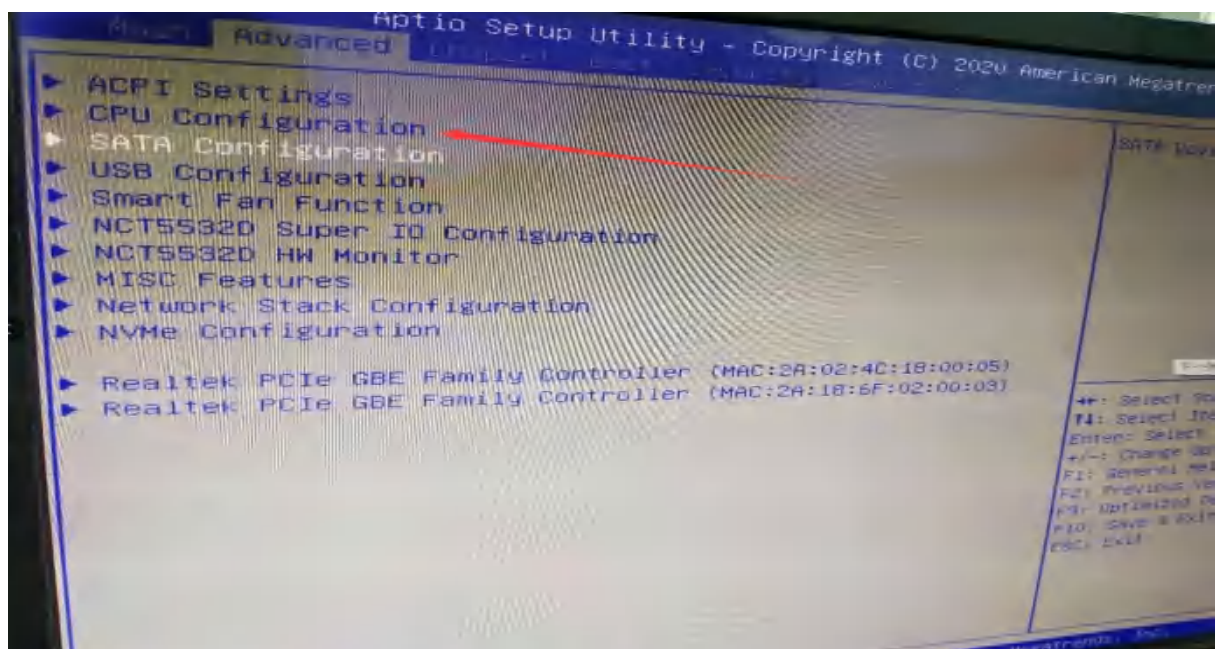


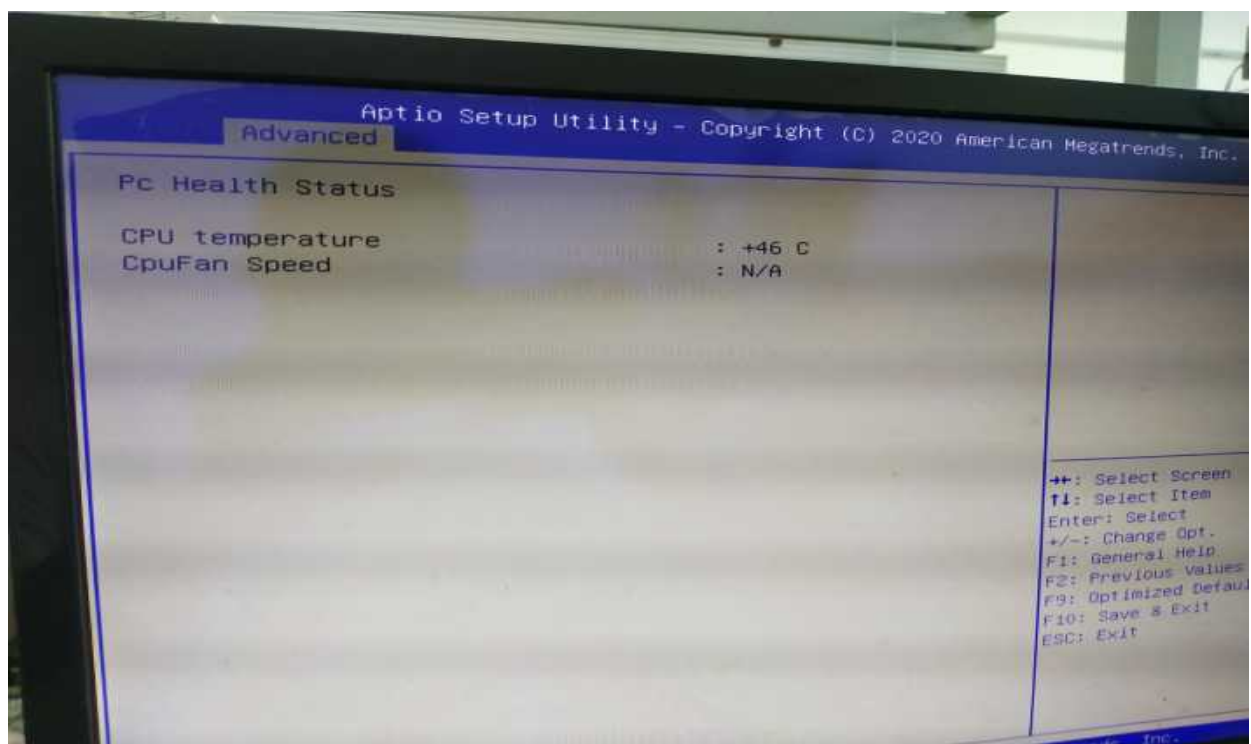
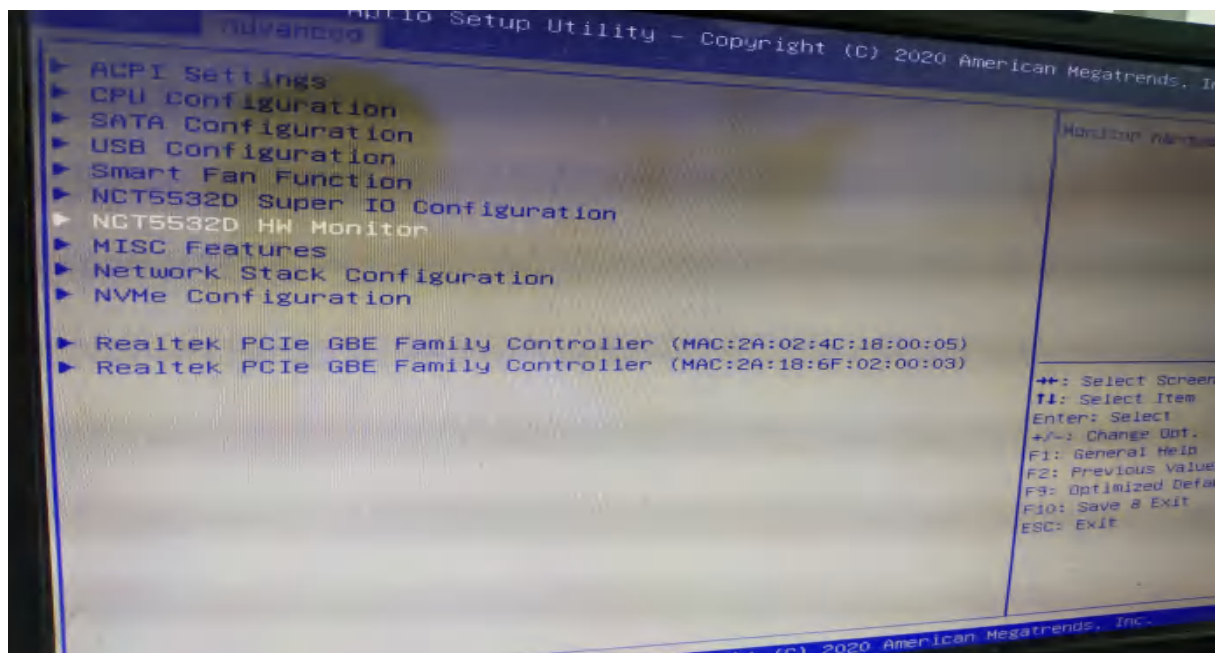
主板 BIOS 版本（进入 BIOS 开机连续按 DEL 键/快捷启动按 F11 键/保存按 F10 键）



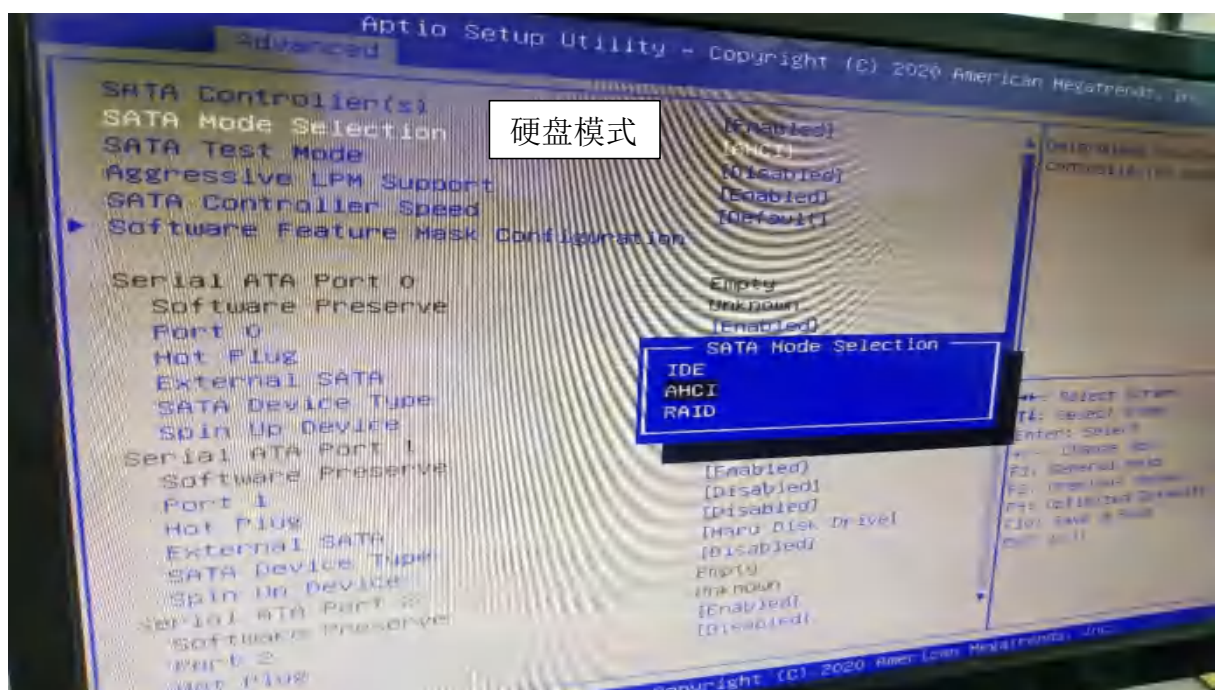
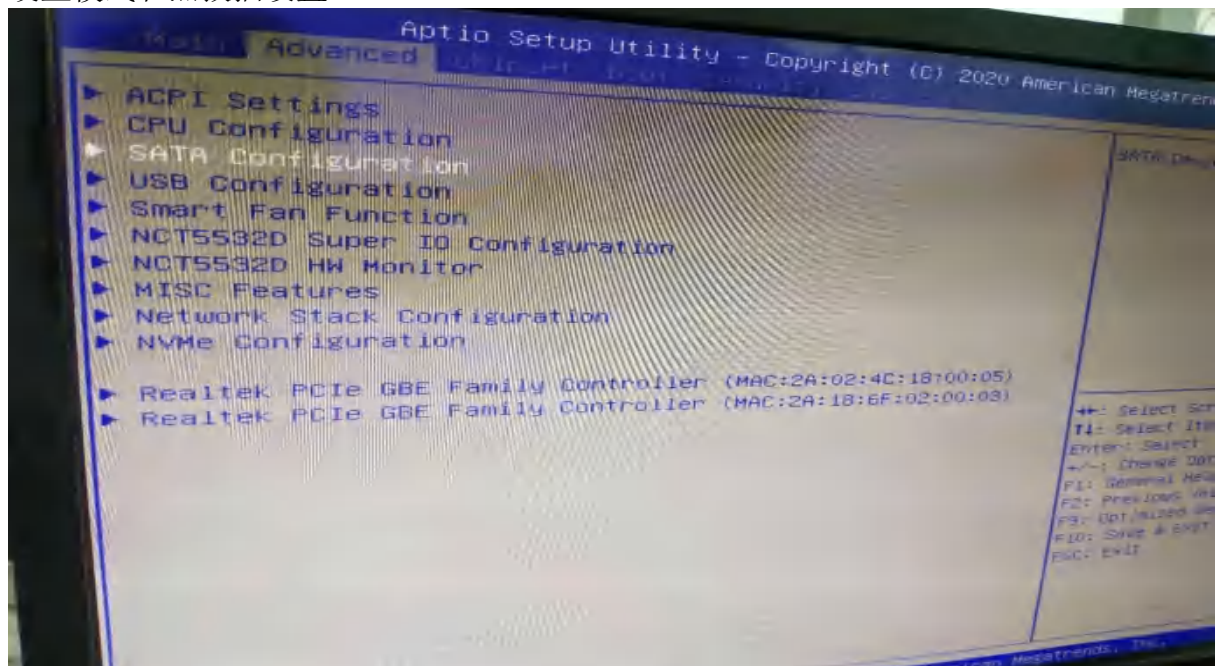
打开 VT-X 设置

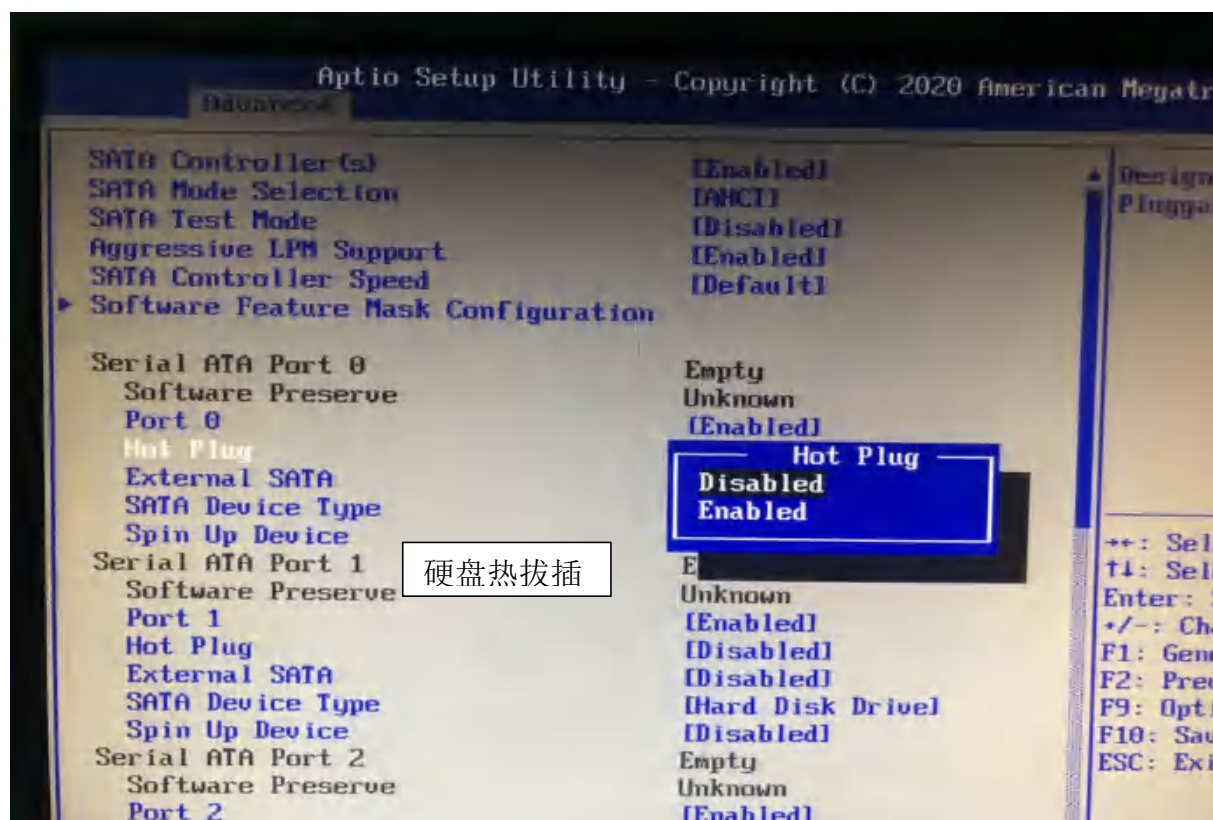


CPU 温度设置

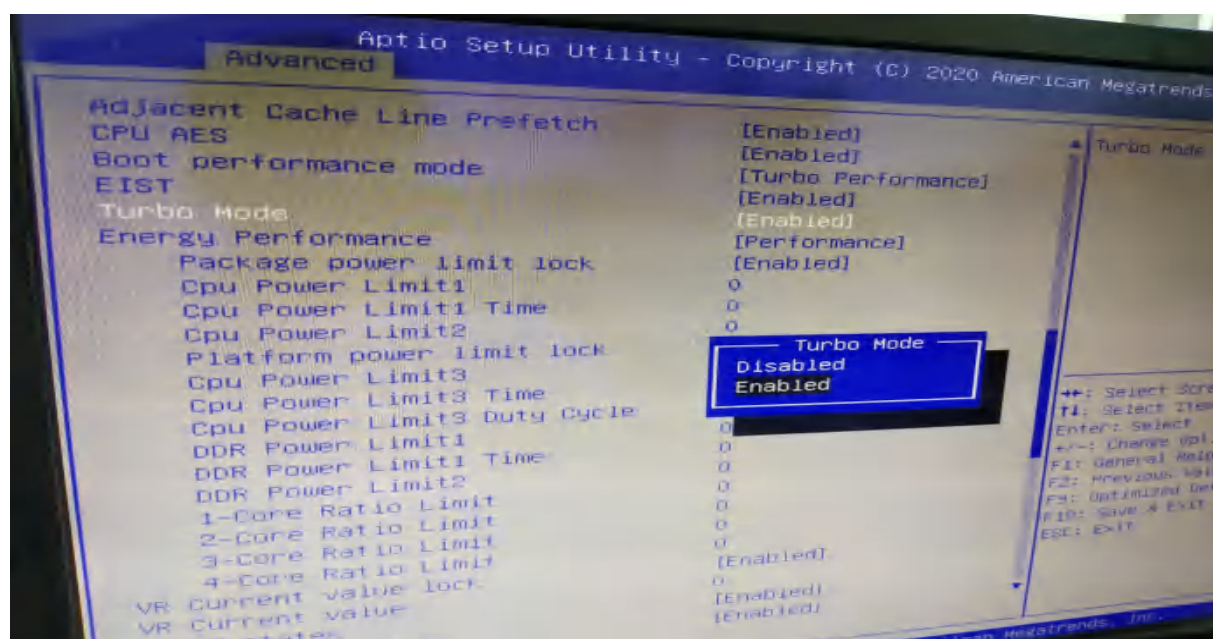


硬盘模式和热拔插设置

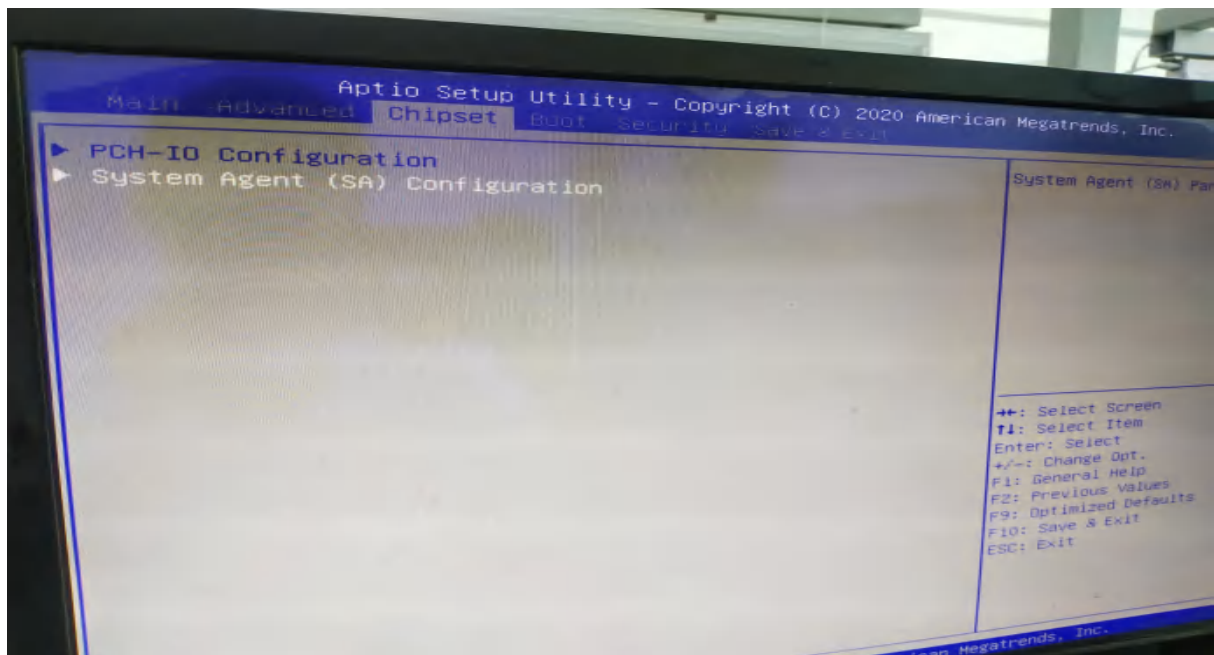




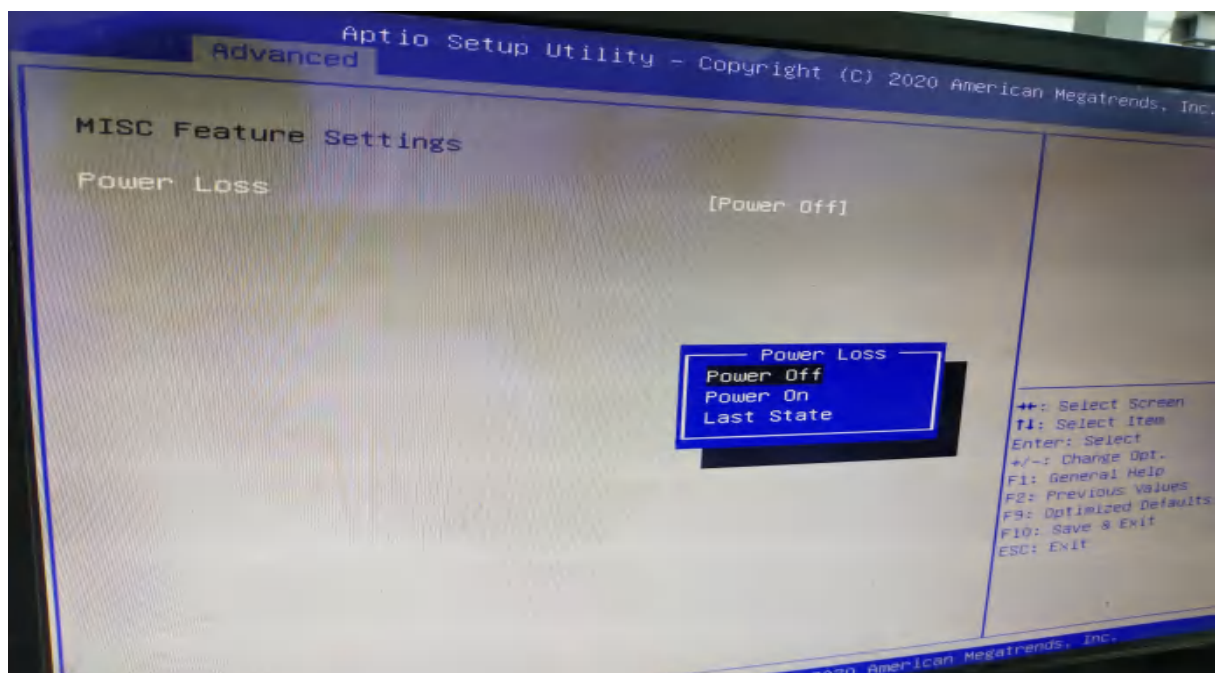
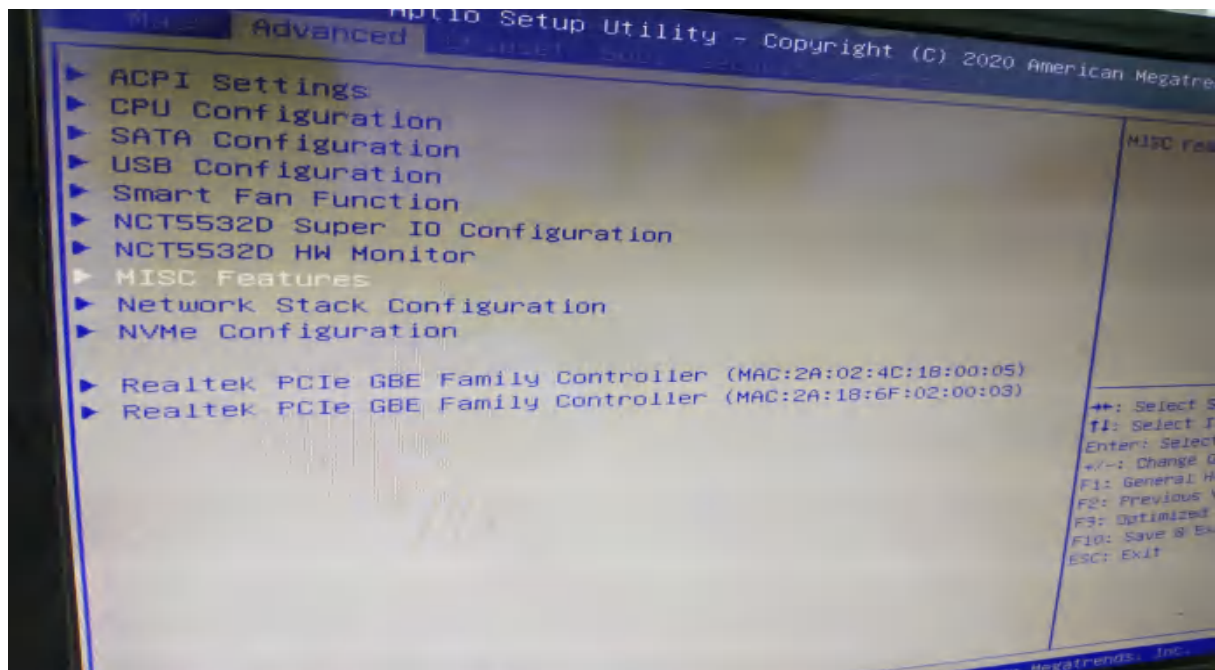
TURBO MODE 模式



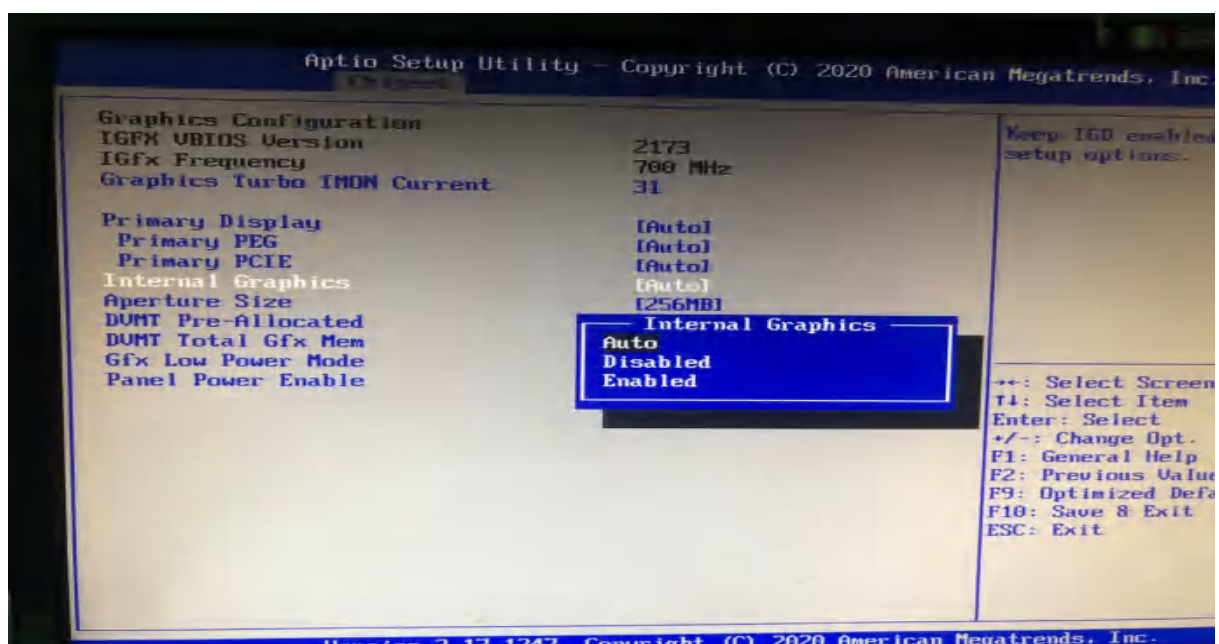
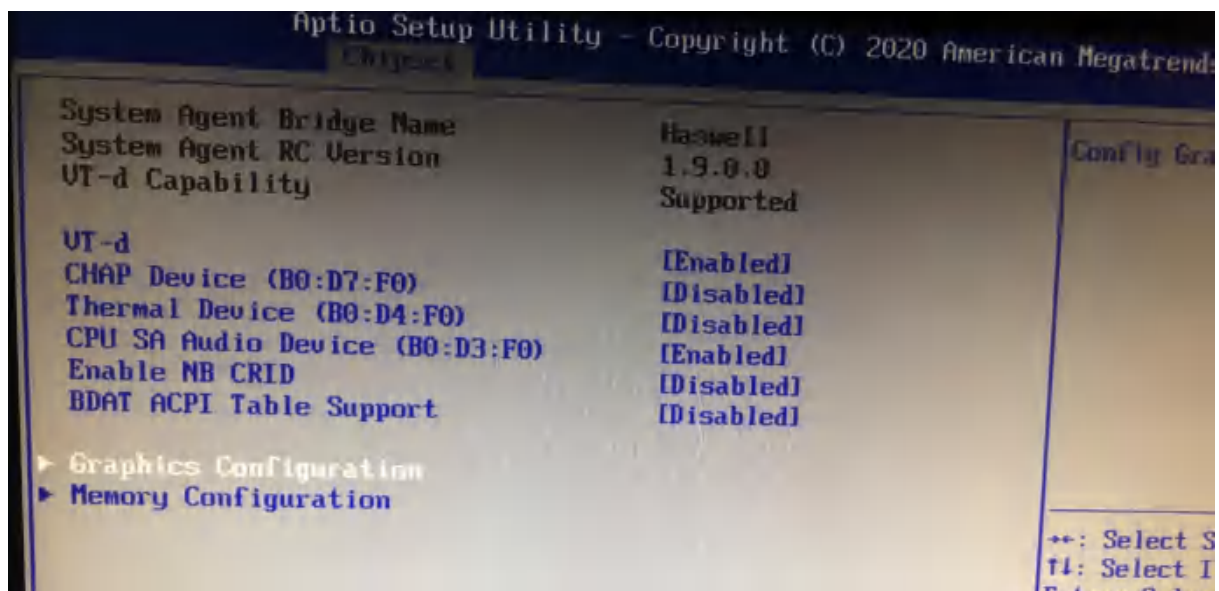
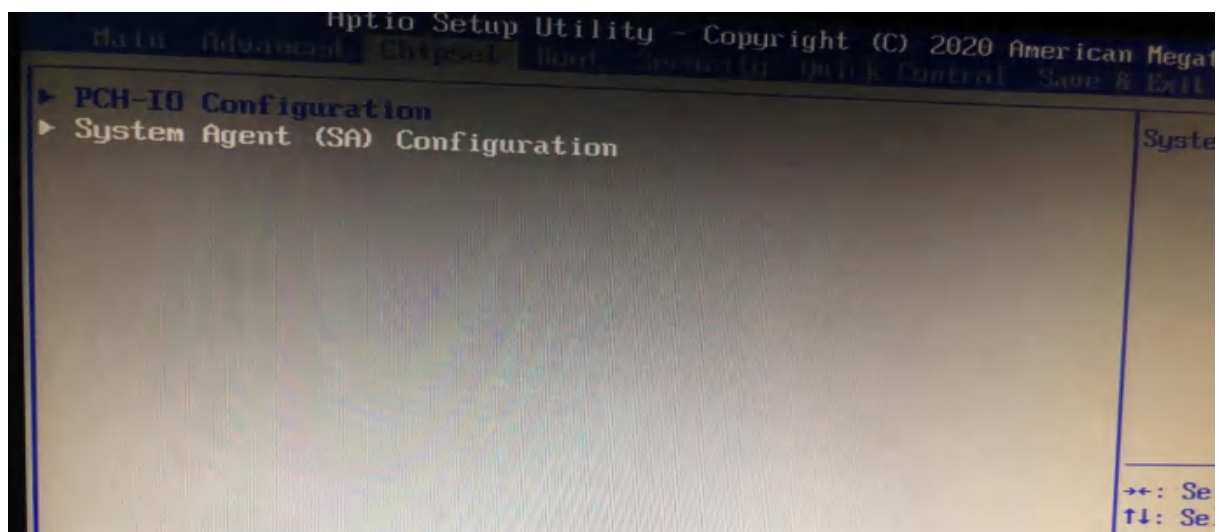
打开 VT-D 设置



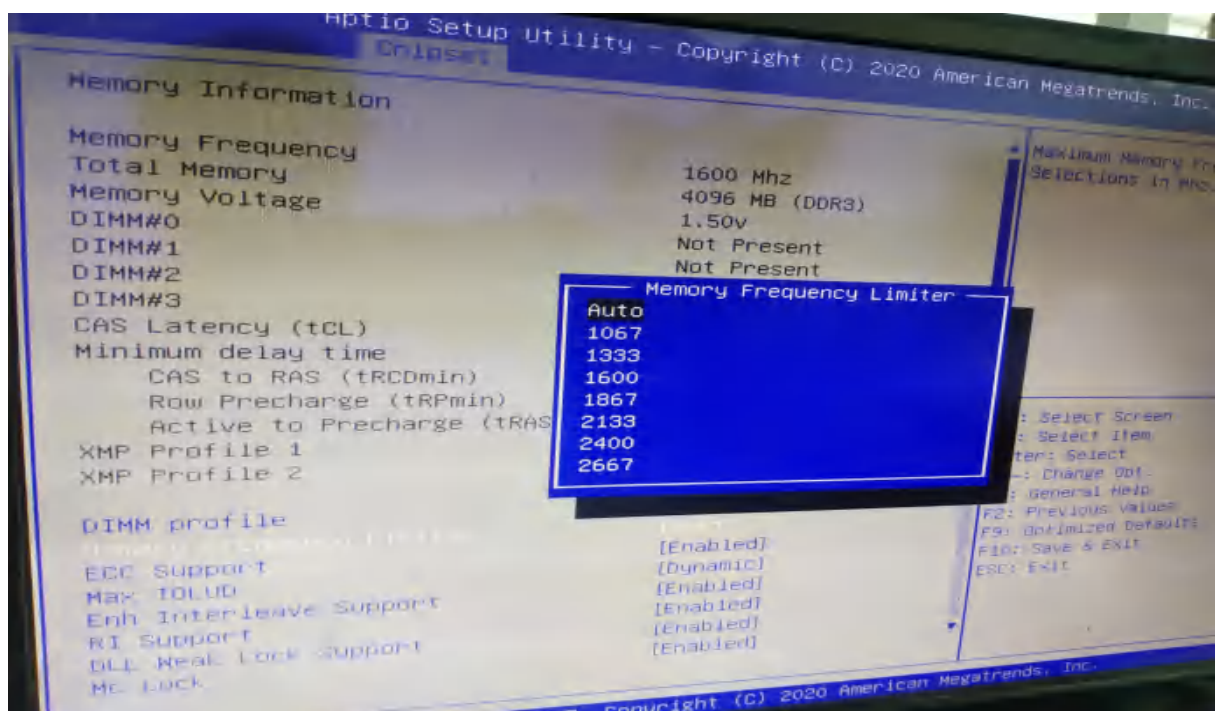
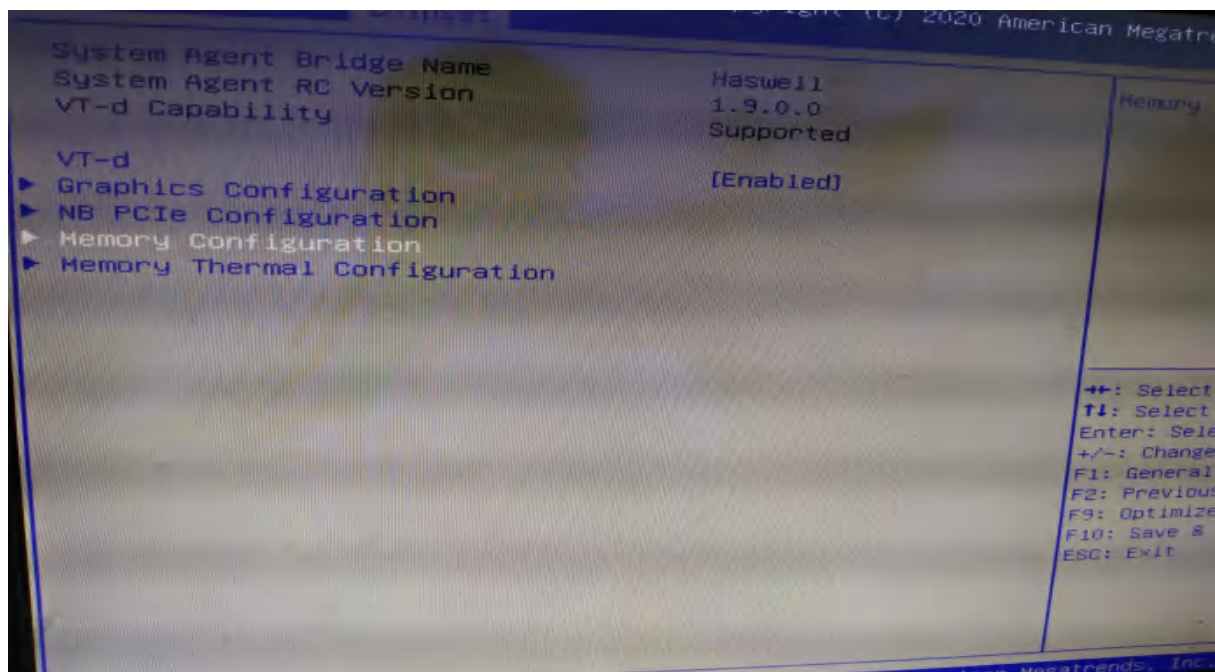
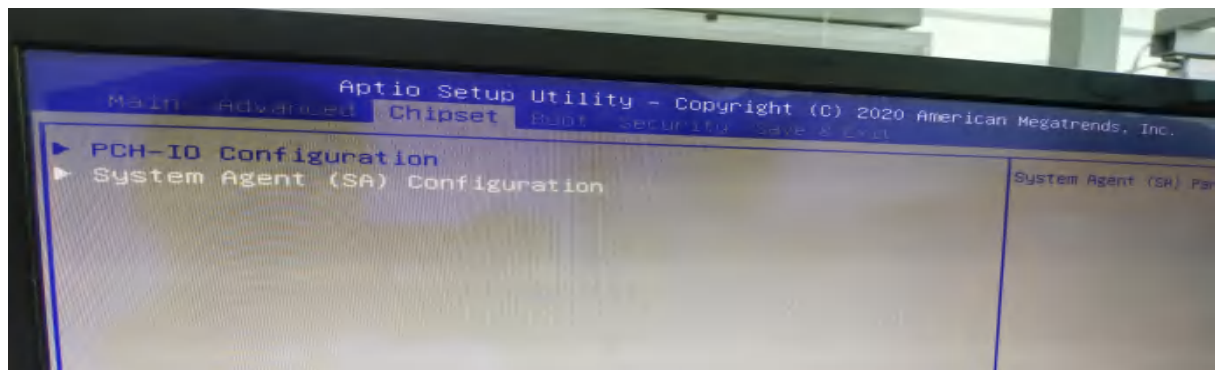
来电启动设置



核显设置



内存频率设置



智能温控设置

